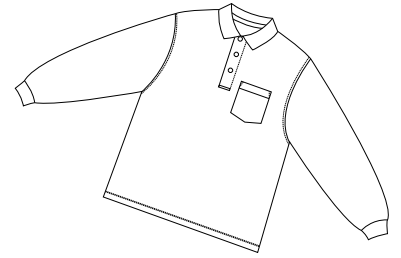
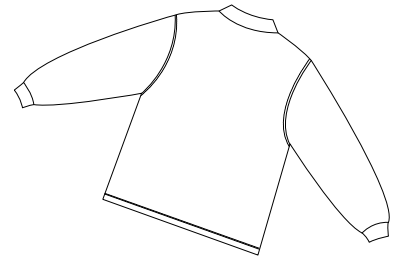


Silk Touch Long Sleeve Sport Shirt with Pocket

PORT AUTHORITY®



Front



Back

K500LSP

- * 5-ounce * 65/35 poly/cotton pique * Flat knit collar and cuffs
- * Double-needle armholes and bottom hem * Side vents
- * Metal buttons with dyed-to-match rims

Care Instructions:

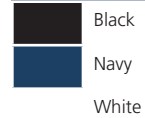
Machine wash cold with like colors.
Do not bleach.
Tumble dry low.
Warm iron if necessary.

Finished Measurements in Inches

Size	XS	S	M	L	XL	2XL	3XL	4XL
Chest	19.5	20.5	21.5	23.5	25.5	27	28.5	30
Body	25.5	26.5	30	31	32	33	33.5	34
Sleeve	32	34	35	36	37	38	39	40
Collar	15.5	16	16.5	17	17.5	18	18.5	19
Pocket	4.5x5	4.5x5	4.5x5	4.5x5	4.5x5	4.75x5.5	4.75x5.5	4.75x5.5

Chest width measured 1" below arm hole. Body length measured from center back neck seam to hem.
Sleeve length measured from center back neck seam to hem. Collar measured by circumference. Pocket WxH.

Colors



Please Note:

Colors shown are approximate and for reference only. For closest match see PMS colors, or for exact match, returnable samples and grommited samples are available.

Color Chart

Colors	Black	Navy	White
Textile PMS	19-4006TC	19-3920TC	11-0601TC
General PMS	Process Black	533C	No Match